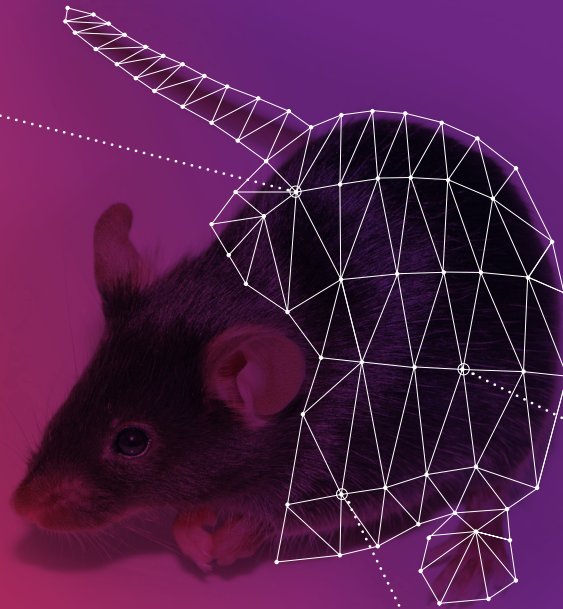


📖 Expertise



★ Superior Products

🏠 Unique Platforms

The Taconic Commercial Model Portfolio

Models to Drive Discovery

Taconic Biosciences is uniquely positioned to enable drug discovery through animal models by being the only company that partners with customers to provide expertise, quality, and availability, along with downstream services.

EXPERTISE AT EVERY STEP

- ▶ PhD customer service support to answer questions
- ▶ Field Application Scientists to help design your study
- ▶ Veterinary, genetic, animal health, and microbiome experts
- ▶ Custom model generation and downstream colony management solutions
- ▶ Extensive and curated resources to empower customers to find the best solution

HIGHEST QUALITY STANDARDS IN THE INDUSTRY

- ▶ Only company with globally harmonized health standards and genetic integrity
- ▶ Only company with a comprehensive microbiome platform
- ▶ Rigorous and high-frequency health and genetic monitoring program, with transparency of information
- ▶ Data supporting drug discovery applications for key models

AVAILABILITY AND ACCESS TO DRIVE GLOBAL RESEARCH

- ▶ Largest genetically engineered rodent model portfolio available to both profit and non-profit organizations in the world
- ▶ Worldwide availability through Taconic US and EU production sites and a network of partners
- ▶ Unique portfolio of super immunodeficient models based on the CIEA NOG mouse® for immuno-oncology and infectious disease
- ▶ Tailored availability options to support everything from spot orders to supply agreements

YOUR PARTNER

WHAT WE DO

Taconic Biosciences is a fully-licensed, global leader in genetically engineered rodent models and services. Founded in 1952, Taconic provides the best animal solutions so that customers can acquire, custom-generate, breed, precondition, test, and distribute valuable research models worldwide.

WHO WE ARE

Taconic has created a unique ecosystem of experts to provide our customers with the best animal model solutions. Whether it is choosing the right model for your study, designing a custom model, creating an efficient breeding plan, or providing expertise in critical support functions like veterinary science, genetics, and embryology; Taconic is ready to help you drive your research from idea to cure.

CONTACT US

To get started, contact one of our customer service team members. Contact us at info@taconic.com.

VISIT TACONIC.COM

There is so much more to learn. Visit taconic.com to see our full breadth of animal model solutions and valuable resources.

The Complete **Solution**

MODEL GENERATION SOLUTIONS

Taconic's Model Generation Solutions empower our customers with a unique combination of capabilities, specifically tailored to each individual discovery program:

- ▶ Most experienced model generation and breeding company
- ▶ Most comprehensive toolkit
- ▶ Exclusive programs
- ▶ Concierge approach to partnering with customers

COLONY MANAGEMENT SOLUTIONS

Taconic's fully-integrated colony management solutions bring innovative models from design to study-ready cohorts with unprecedented speed and transparency:

- ▶ Most experienced model generation and colony management company
- ▶ The complete toolkit
- ▶ Colony management solution process
- ▶ Partnering with our customers
- ▶ Expanded applications and opportunities

MODELS TO DRIVE DRUG DISCOVERY

Taconic Biosciences is uniquely positioned to enable drug discovery through animal models by being the only company that partners with customers to provide expertise, quality, and availability, along with downstream services.

- ▶ Expertise at every step
- ▶ Highest quality standards in the industry
- ▶ Availability and access to drive global research

Get in touch for more information about our products and services.

LEARN MORE AT: TACONIC.COM

US: 1-888-822-6642 | EU: +45 70 23 04 05 | INFO@TACONIC.COM