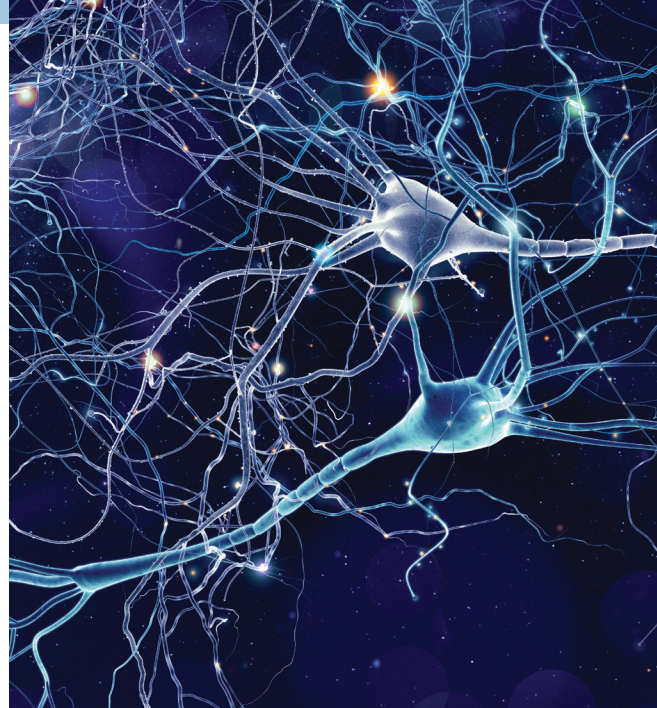


Neuroscience Portfolio

Easy Access to Relevant Models for Key Applications

A major challenge in neuroscience research and drug discovery is the lack of easy access to relevant animal models for use in screening drug candidates.



EXCLUSIVE TRANSGENIC ANIMAL MODELS FOR STUDY OF:

Alzheimer's Disease

- ▶ APPSWE (Tg2576)
- ▶ Tau P301L (JNPL3)
- ▶ APPSWE-Tau (TAPP)
- ▶ Humanized APOE2, APOE3, APOE4
- ▶ APPSWE/PS1 (line Arte10)

Parkinson's Disease

- ▶ Mouse and rat models with LRRK2 or alpha synuclein mutations
- ▶ hTH-EGFP reporter rat
- ▶ Floxed Parkin mouse

Amyotrophic Lateral sclerosis (ALS)

- ▶ SOD1 rat

Neuropsychiatric Disorders

- ▶ 1q21.1, 15q13.3, 22q11.2 Copy Number Variant (CNV) Models

AND MORE...

STANDARD STRAINS AND STOCKS FOR:

Alzheimer's Disease

- ▶ Behavior
- ▶ Addiction
- ▶ Experimental Autoimmune Encephalomyelitis (EAE)
- ▶ Development
- ▶ Timed pregnant and aged animals available
- ▶ Services for neuroscience research, including:

Parkinson's Disease

- ▶ Mouse and rat models with LRRK2 or alpha synuclein mutations
- ▶ hTH-EGFP reporter rat
- ▶ Floxed Parkin mouse:
 - Murine biospecimen collection
 - Aging
 - Special diet administration
- ▶ Study the intersection of neuroscience and microbiome:
 - Germ-free mice readily available
 - Compare strains at various health standards
 - Germ-free derivation of any commercially available mouse

We provide a wide range of Services tailored to meet your research program's needs. Learn how these Services can be leveraged to accelerate drug discovery by talking with a Taconic expert today!

Get in touch for more information about our products and services.

US: 1-888-822-6642 | EU: +45 70 23 04 05 | info@taconic.com | Learn more at: [taconic.com](https://www.taconic.com)

©Taconic Biosciences, Inc. All rights reserved. Contents of this publication may not be reproduced in any form without prior permission.

