

# Colony Management Solutions

## Improving Efficiency and Reducing Waste in Mouse Breeding Programs



Starting a research project with a new rodent model, especially a genetically engineered one, requires a major investment of time and money. One of the most costly parts is managing the breeding colony. This includes growing the colony after model generation, maintaining it, and producing enough animals at the right time for experimental cohorts.

If breeding is not well planned, researchers can easily end up with too many or too few animals at the wrong time. This not only wastes money and resources, but it can also delay research.

**Taconic's Colony Management Solutions** help researchers get the most from their animal models by taking care of breeding and colony management in our AAALAC-accredited facilities worldwide. Before any work begins, Taconic's scientific team helps define the project's goals and design the most efficient breeding plan tailored to your experimental needs. Once a plan is in place, dedicated project managers oversee and manage every aspect of production.

### SAVE TIME AND MONEY AND REDUCE ANIMAL WASTE WITH SMART PLANNING

Choosing the right breeding strategy makes a big difference in cost, efficiency, and animal use.

One common mistake is the **"plan-as-you-go"** approach where goals are unclear, breeding performance isn't tracked, and decisions are made reactively. This often leads to overproduction, animals being bred but not used, and higher overall costs.

#### Taconic's team helps avoid these problems by:

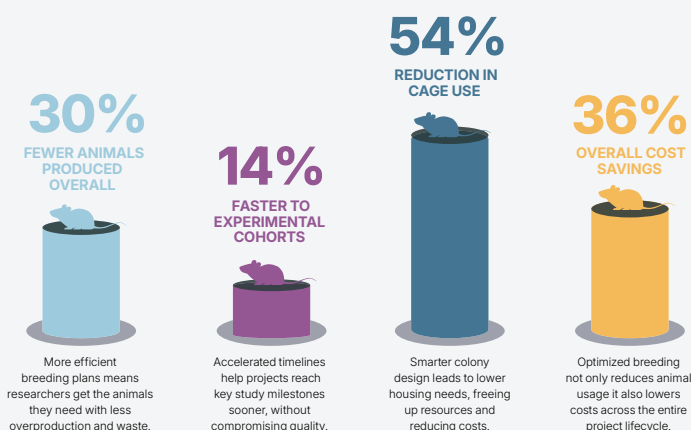
- ▶ Designing customized breeding strategies
- ▶ Actively managing colonies based on the needs of researchers
- ▶ Ensuring animals are available when researchers need them

#### With Taconic's help, you can:

- ▶ Use animals more efficiently
- ▶ Lower costs
- ▶ Get study cohorts faster

### WHY CHOOSE TACONIC'S COLONY MANAGEMENT SOLUTIONS OVER THE "PLAN-AS-YOU-GO" APPROACH FOR YOUR NEW GEM COLONY?

When establishing a new genetically engineered mouse (GEM) colony from just 3 founders to a full experimental cohort, the benefits of a structured, expert-led breeding strategy are clear<sup>1</sup>:



1. Representative benefits for a typical colony management project; actual result may vary. Please speak with us to explore potential benefits for your project.

**Taconic's Colony Management Solutions deliver these advantages through scientifically informed breeding designs, continuous oversight, and proactive adjustments all tailored to your research goals.**

Get in touch for more information about our products and services.

US: 1-888-822-6642 | EU: +45 70 23 04 05 | [info@taconic.com](mailto:info@taconic.com) | Learn more at: [taconic.com](https://taconic.com)

©Taconic Biosciences, Inc. All rights reserved. Contents of this publication may not be reproduced in any form without prior permission.

