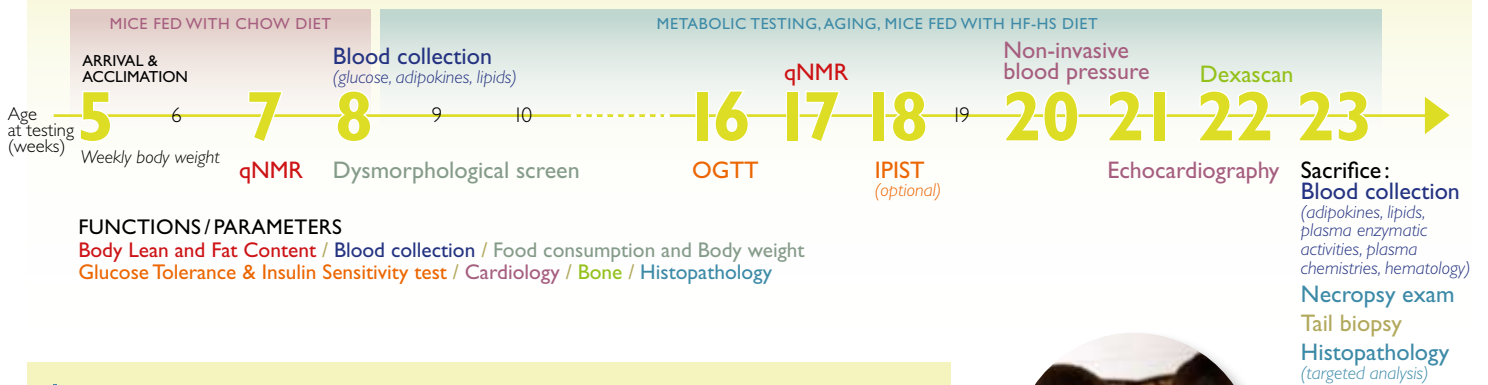


COMPREHENSIVE FIRST LINE PHENOTYPING

Comprehensive first line phenotyping can comprise three standard protocols or can be restricted to specific physiological system-focused protocols (detailed below). Numerous additional tests are available for either customized first line or second line phenotyping protocols (see PhenoPro catalogue). Suggested treatment, size and age-group of cohorts of mice for each phenotyping protocol for a given mutant model are also detailed hereunder.

METABOLISM, CARDIOLOGY, HISTOLOGY

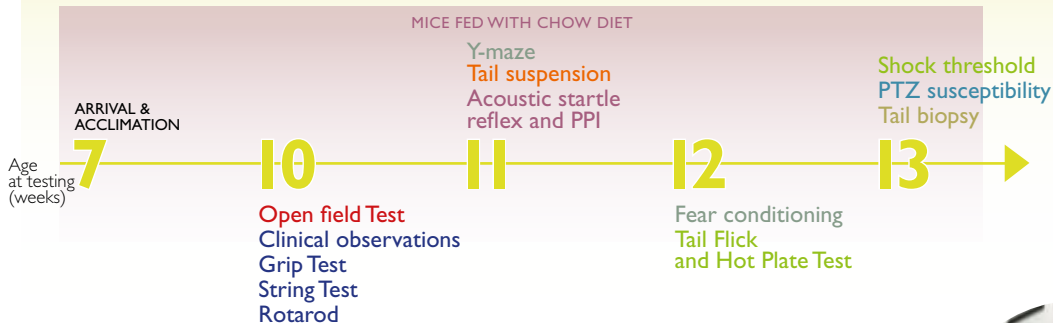


IMMUNOLOGY FOCUSED



BEHAVIOR & COGNITION FOCUSED

SHORT TEST BATTERY



FUNCTIONS/PARAMETERS: Anxiety / Sensory motor functions / Learning and memory / Depression / Schizophrenia / Pain sensitivity / Epilepsy

Test order: from least to most stressful

